



INTERESTED IN HAVING YOUR ART FEATURED AT PTI?

Each year in February a call to artists is sent to art councils statewide. Artists can submit their work for review and selection by the Public Art Committee of the Piedmont Triad International Airport.

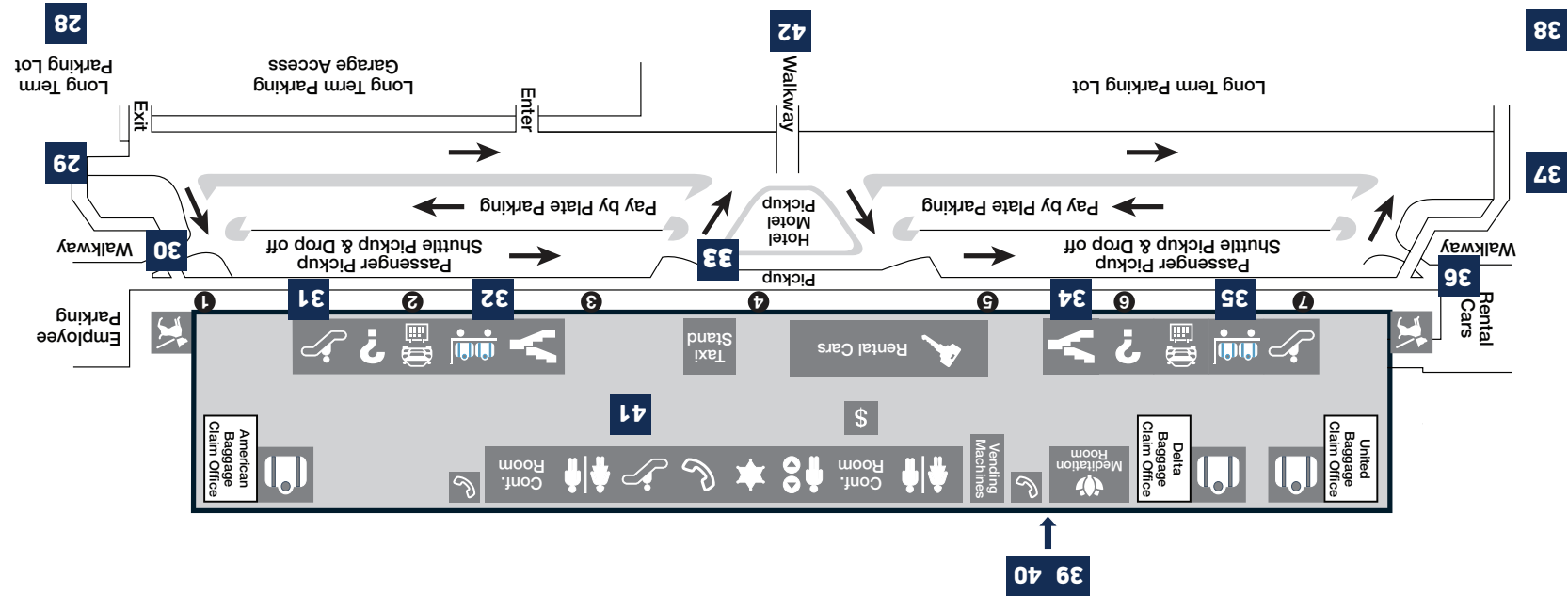
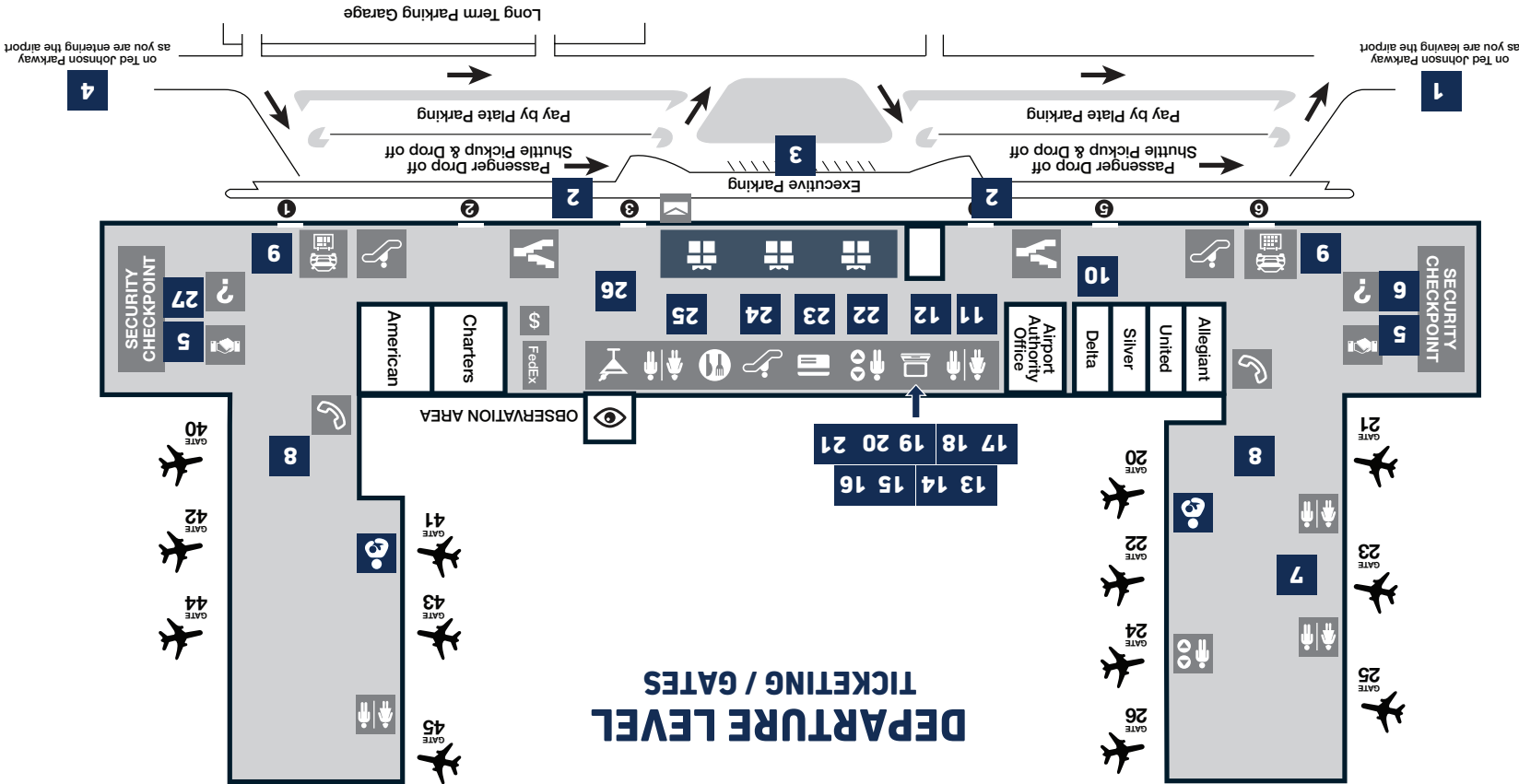
The goal of the *PTI Art Master Plan and Program* is to showcase the diversity, creativity, and history of the region through art as a means to welcome and honor the patrons of our airport.

For more information, contact Stephanie Freeman at FreemanS@gsoair.org.

WALKING TOUR OF ART



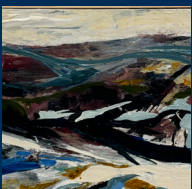

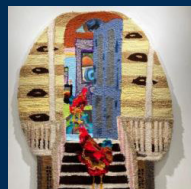
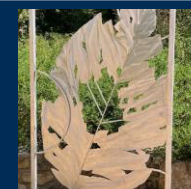

CELEBRATING LOCAL ARTISTS FROM ALL OVER THE TRIAD

ART LOCATOR MAP



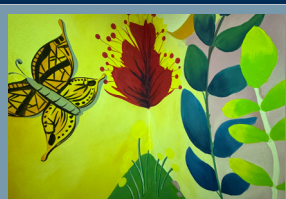
ARRIVAL LEVEL BAGGAGE CLAIM / GROUND TRANSPORTATION

The Piedmont Triad International Airport is proud to present our *Walking Tour of Art*. Celebrating *local artists* from all over the Triad and surrounding areas, the art displayed on the arrivals and departures levels and outside the airport has been selected based on *variety, creativity and expression*. The collection on display rotates annually. *Visit us often and enjoy the arts at PTL.*

<div>1</div> <div></div> <div>SUNFLOWER GATE III</div> <div>JIM GALLUCI</div>	<div>2</div> <div></div> <div>OAK LEAF LIGHT COLUMNS (4)</div> <div>JIM GALLUCI</div>	<div>3</div> <div></div> <div>SIX BLADE DESIGNS</div> <div>LAURA LASHLEY</div>	<div>4</div> <div></div> <div>ARROW ARCH</div> <div>JIM GALLUCI</div>	<div>5</div> <div></div> <div>LIFT</div> <div>MATTHEW MCCONNELL</div>	<div>6</div> <div></div> <div>MRS. BLING</div> <div>JERRY CARTWRIGHT</div>	<div>7</div> <div></div> <div>G SWAG</div> <div>MARY CATER TAUB</div>	<div>8</div> <div></div> <div>HEALING GARDEN</div> <div>MOSES CONE CANCER CENTER</div>	<div>9</div> <div></div> <div>ALUMINUM PAPER AIRPLANES IN FLIGHT</div> <div>JAY JONES</div>	<div>10</div> <div></div> <div>PIEDMONT CRAFTSMEN</div> <div>VARIOUS ARTISTS</div>
<div>11</div> <div></div> <div>NORTH CAROLINA GARDEN</div> <div>ROBERT YORK</div>	<div>12</div> <div></div> <div>MY NATURE DISTILLED 6 (REYNOLDA GARDENS)</div> <div>DON GREEN</div>	<div>13</div> <div></div> <div>BLUE GRASS</div> <div>FOSTER BULLOCK</div>	<div>14</div> <div></div> <div>LANDMARKS 1</div> <div>FOSTER BULLOCK</div>	<div>15</div> <div></div> <div>LANDMARKS 2</div> <div>FOSTER BULLOCK</div>	<div>16</div> <div></div> <div>SUNRISE 1</div> <div>FOSTER BULLOCK</div>	<div>17</div> <div></div> <div>SUNRISE 2</div> <div>FOSTER BULLOCK</div>	<div>18</div> <div></div> <div>BEAUTIFUL RHYTHM</div> <div>YOLANDA GRIER</div>	<div>19</div> <div></div> <div>THE JOURNEY</div> <div>YOLANDA GRIER</div>	<div>20</div> <div></div> <div>ABUNDANCE</div> <div>YOLANDA GRIER</div>
<div>21 A</div> <div></div> <div>AWAY</div> <div>GINNY STOCKER</div>	<div>21 B</div> <div></div> <div>BOUNDLESS</div> <div>GINNY STOCKER</div>	<div>21 C</div> <div></div> <div>CHAOS CLIMBING</div> <div>GINNY STOCKER</div>	<div>21 D</div> <div></div> <div>DESCEND</div> <div>GINNY STOCKER</div>	<div>21 E</div> <div></div> <div>DISTANT</div> <div>GINNY STOCKER</div>	<div>21 F</div> <div></div> <div>ESSENCE</div> <div>GINNY STOCKER</div>	<div>21 G</div> <div></div> <div>INCOMING</div> <div>GINNY STOCKER</div>	<div>21 H</div> <div></div> <div>SERENITY</div> <div>GINNY STOCKER</div>	<div>21 I</div> <div></div> <div>STILL</div> <div>GINNY STOCKER</div>	<div>21 J</div> <div></div> <div>SURFS UP</div> <div>GINNY STOCKER</div>
<div>21 K</div> <div></div> <div>TERRAIN</div> <div>GINNY STOCKER</div>	<div>21 L</div> <div></div> <div>TORRENTIAL</div> <div>GINNY STOCKER</div>	<div>22</div> <div></div> <div>THIS VERY MOMENT</div> <div>KENN KOTARA</div>	<div>23 A</div> <div></div> <div>THE DEVILS DOCTOR</div> <div>KARENA "KIDD" GRAVES</div>	<div>23 B</div> <div></div> <div>WHEN THE ROOSTER COMES DEATH FOLLOWS</div> <div>KARENA "KIDD" GRAVES</div>	<div>23 C</div> <div></div> <div>DEATHLY OWLS & POCKET REMEDIES</div> <div>KARENA "KIDD" GRAVES</div>	<div>24</div> <div></div> <div>A TRAVELER'S GARDEN</div> <div>GARY CALDWELL AND HOLLY FELICE</div>	<div>25</div> <div></div> <div>MY NATURE DISTILLED - NOVEMBER</div> <div>DON GREEN</div>	<div>26 A</div> <div></div> <div>FIRST CHAIR</div> <div>JOHN GIBBS</div>	<div>26 B</div> <div></div> <div>FUGUE</div> <div>JOHN GIBBS</div>
<div>26 C</div> <div></div> <div>RECLINER</div> <div>JOHN GIBBS</div>	<div>27</div> <div></div> <div>ACT 1</div> <div>JESSICA BLOCH-SCHULMAN</div>	<div>28</div> <div></div> <div>PS1</div> <div>JOYNER ELEMENTARY 2020 - 2022</div>	<div>29</div> <div></div> <div>ALEI-BALLENA</div> <div>NICO AMORTEGUI</div>	<div>30</div> <div></div> <div>OAK LEAF BENCH</div> <div>JIM GALLUCI</div>	<div>31</div> <div></div> <div>UNDER THE SAME SKY</div> <div>JORDAN PARAH</div>	<div>32</div> <div></div> <div>TWO QUESTION</div> <div>WAYNE VAUGHN</div>	<div>33</div> <div></div> <div>ON THE OTHER SIDE</div> <div>WAYNE VAUGHN</div>	<div>34</div> <div></div> <div>TRIANGULATION IN GREEN</div> <div>MATT AMANTE</div>	<div>35</div> <div></div> <div>FALL FOR LOVE</div> <div>SCOTT HARRIS</div>
<div>36 A</div> <div></div> <div>TO REACH</div> <div>HONGSOCK LEE</div>	<div>36 B</div> <div></div> <div>COMPLEMENTARY GEOMETRY 1</div> <div>HONGSOCK LEE</div>	<div>36 C</div> <div></div> <div>COMPLEMENTARY GEOMETRY 2</div> <div>HONGSOCK LEE</div>	<div>36 D</div> <div></div> <div>COMPLEMENTARY GEOMETRY 3</div> <div>HONGSOCK LEE</div>	<div>37</div> <div></div> <div>SCORPIUS</div> <div>LAWRENCE FEIR</div>	<div>38</div> <div></div> <div>PS2</div> <div>ALLEN JAY ELEMENTARY 2020 - 2022</div>	<div>39 A</div> <div></div> <div>JUST BEFORE SUNSET AT FORT VICTORIA</div> <div>CINDY TAPLIN</div>	<div>39 B</div> <div></div> <div>AN OCEAN VIEW AND A PICKETT FENCE</div> <div>CINDY TAPLIN</div>	<div>39 C</div> <div></div> <div>SUMMER AT SALEM LAKE</div> <div>CINDY TAPLIN</div>	<div>40 A</div> <div></div> <div>GREENSBORO GOLDEN HOUR</div> <div>JOHN GIBBS</div>
<div>40 B</div> <div></div> <div>PILOT MOUNTAIN</div> <div>JOHN GIBBS</div>	<div>40 C</div> <div></div> <div>SOUTHERN HOME</div> <div>JOHN GIBBS</div>	<div>41 A</div> <div></div> <div>PLANTATION WITH A TWIST OF PINEAPPLE</div> <div>KYM COOPER</div>	<div>41 B</div> <div></div> <div>MAMA BRAIDING</div> <div>KYM COOPER</div>	<div>41 C</div> <div></div> <div>BLUE LADY</div> <div>KYM COOPER</div>	<div>41 D</div> <div></div> <div>FOUR WOMEN DANCING</div> <div>KYM COOPER</div>	<div>41 E</div> <div></div> <div>SUNNY DAYS</div> <div>KYM COOPER</div>	<div>41 F</div> <div></div> <div>A LITTLE BIT OF DECOR</div> <div>KYM COOPER</div>	<div>41 G</div> <div></div> <div>UNDER THE MOON</div> <div>KYM COOPER</div>	<div>42</div> <div></div> <div>SOMEWHERE UP THERE</div> <div>KATHRYN JONES</div>



NORTH LACTATION SUITE
DARLENE J. MCCLINTON, MFA



SOUTH LACTATION SUITE
DARLENE J. MCCLINTON, MFA